



Arts & Culture Assessment For Summit County

supported by



Completed by The Osgood Group, LLC
Nancy Osgood, President
With consulting partners:
Pat Cirillo, Cypress Research
Amy Morgenstern, Main Stream Enterprises, Inc.

FINANCIAL TRENDS OF SELECT ARTS & CULTURAL NON-PROFITS

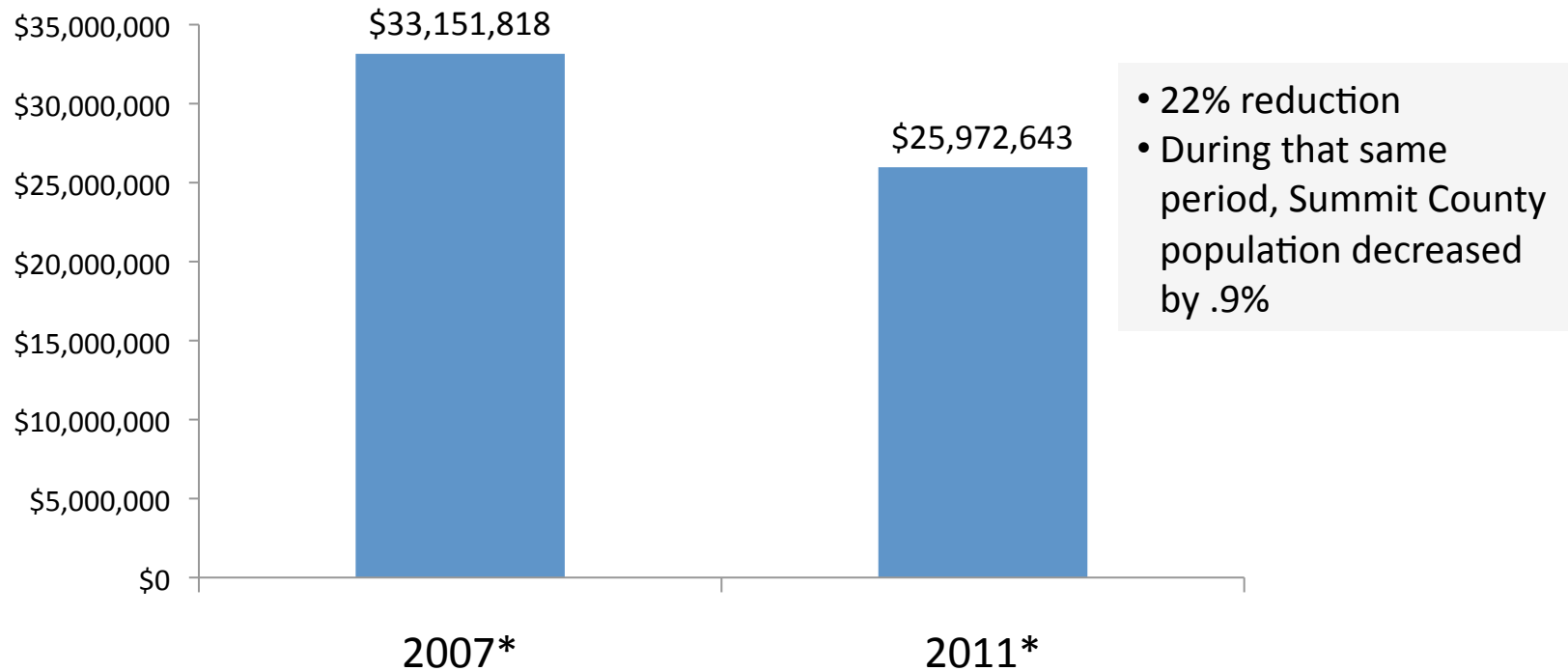
Five Year Historical Data

- Source = GuideStar “financial scan” data on 49 unique Summit County based arts & cultural organizations. They provide historical 990 data on larger organizations only (those who do not file an ‘EZ’ form).

Type of Data	# of Organizations
Have 2007 & 2011 data	30
Have 2008 and 2012 data	2
Org does not serve public	(1)
Have no 2011 or 2012	(15)
Have no 2007 or 2008 data	(2)
All Organizations:	49

31 Orgs
Used In
Historical
Analysis

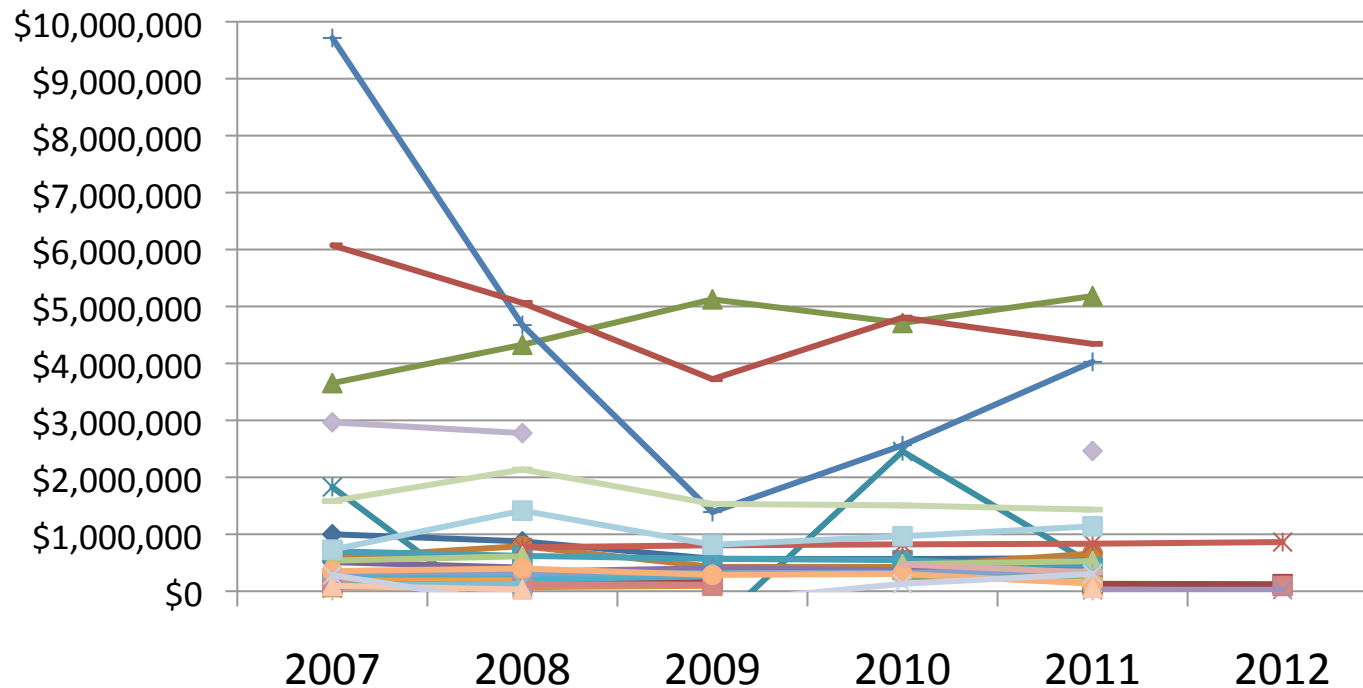
Total Revenue – Five Year Scan 31 Organizations Aggregated



*For two organizations, 2008 & 2012 data were substituted.

Total Revenue – Five Year Scan 31 Organizations, By Year

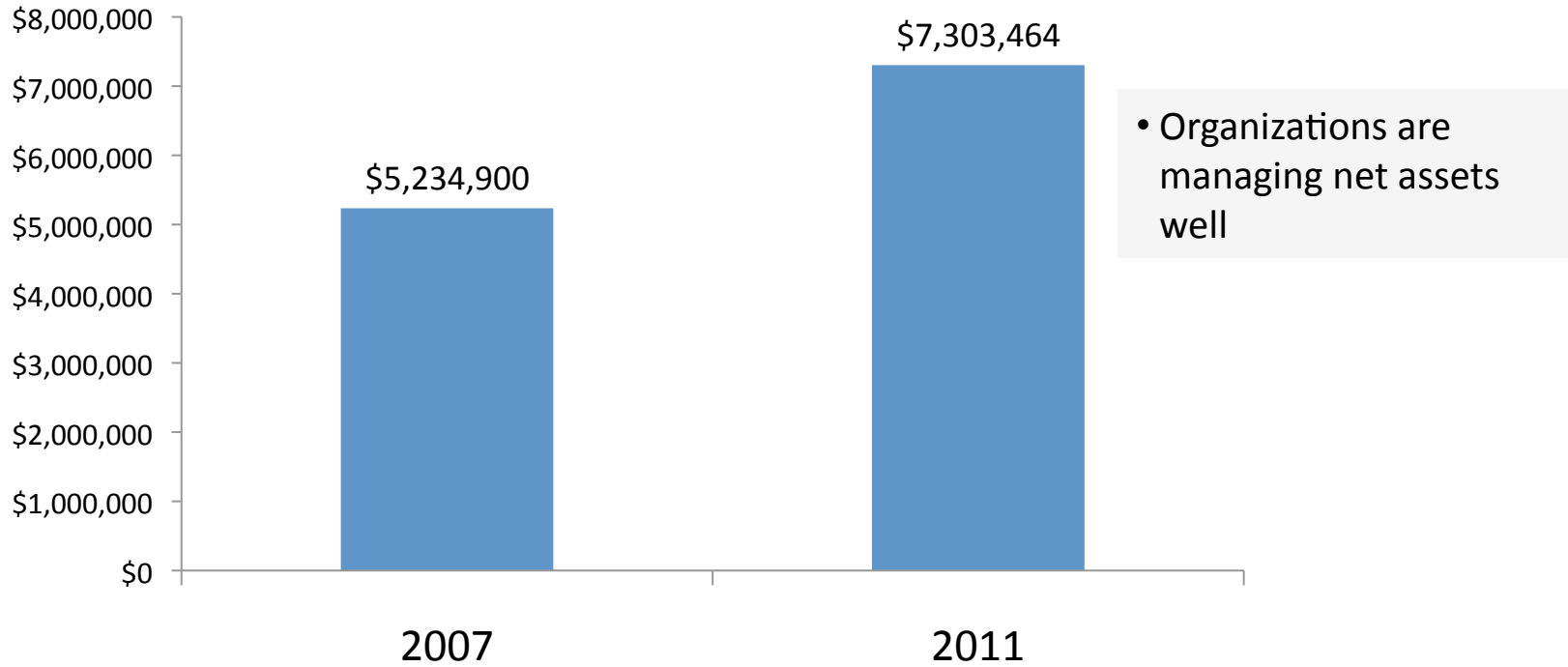
- Much volatility
- Great majority of organizations are small
 - 6 are < \$100,000
 - 6 are \$1M+



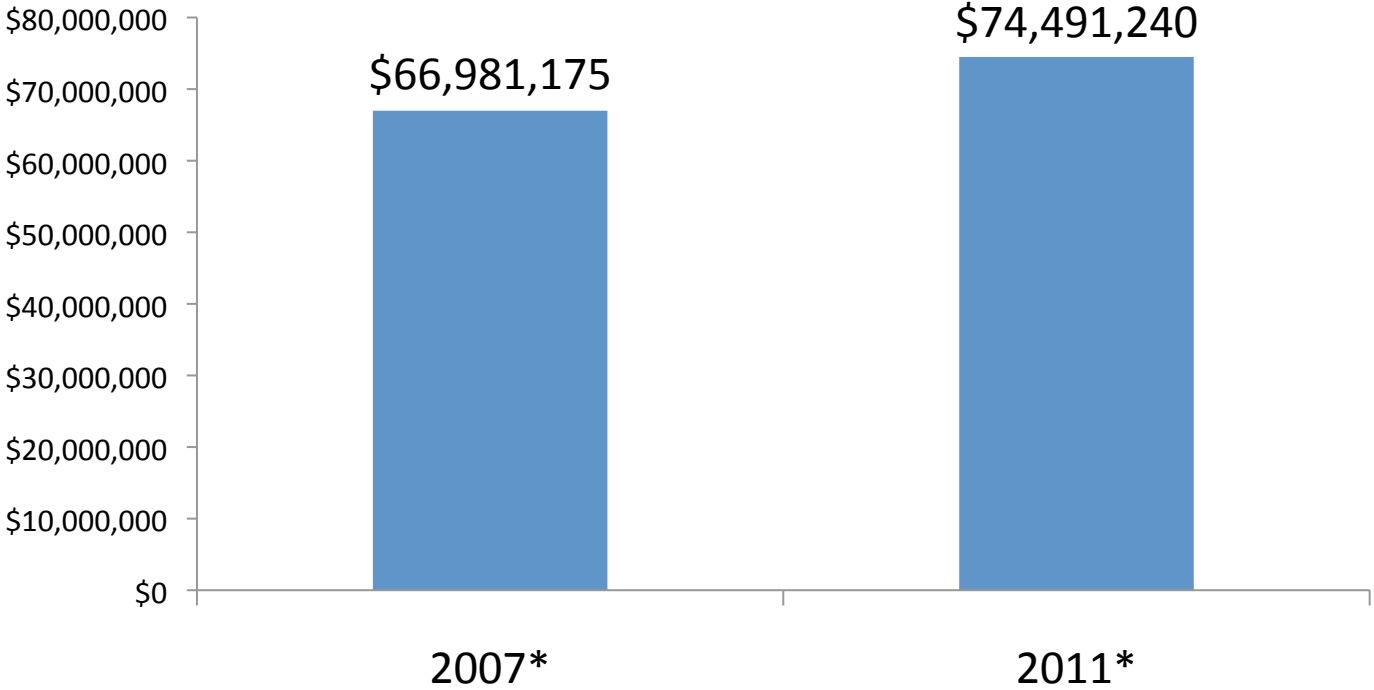
% 5 Year Revenue Growth 31 Organizations



Net Assets – Five Year Scan 31 Organizations Aggregated



Total Gross Land, Buildings & Equipment – Five Year Scan 20* Organizations Aggregated



*The remaining 11 organization had a \$zero value for this variable.

Liquidity – Months of Nonrestricted Liquid Assets – Five Year Scan Median Number of Months



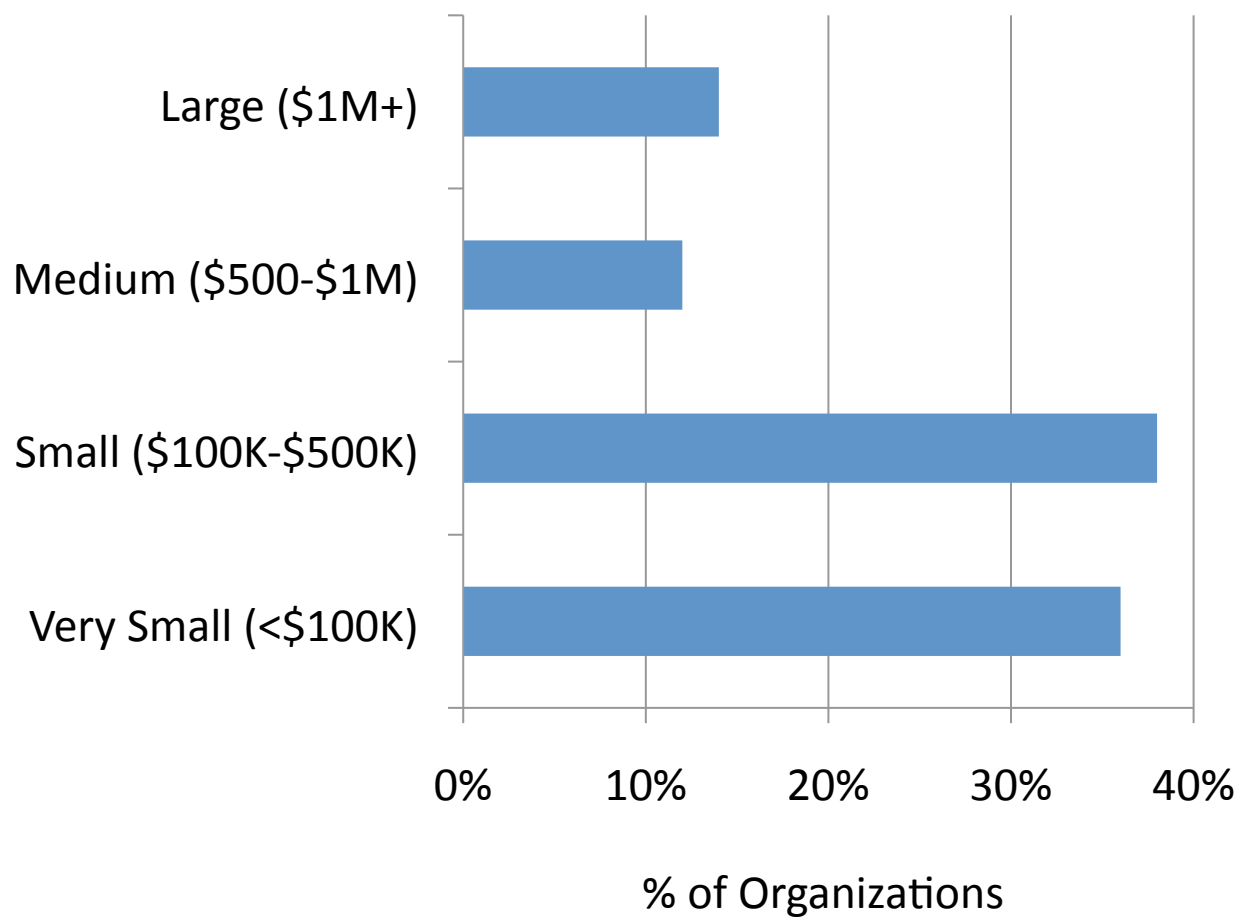
- *The Universe of Arts & Cultural Non-Profits
in Summit County*

List Curation Process

Process	# of Organizations
Combined, de-duped list	604 Entities/Individuals
Art galleries	17
Artist Collaborative Organization	8
Arts instruction/Schools	20
Individual artists/groups	311
Performing arts venue	13
Other	56
Not-For-Profits:	
From E.C. lists, Foundation Center, Guidestar	179 Organizations
Able find <i>recent</i> 990 data	74

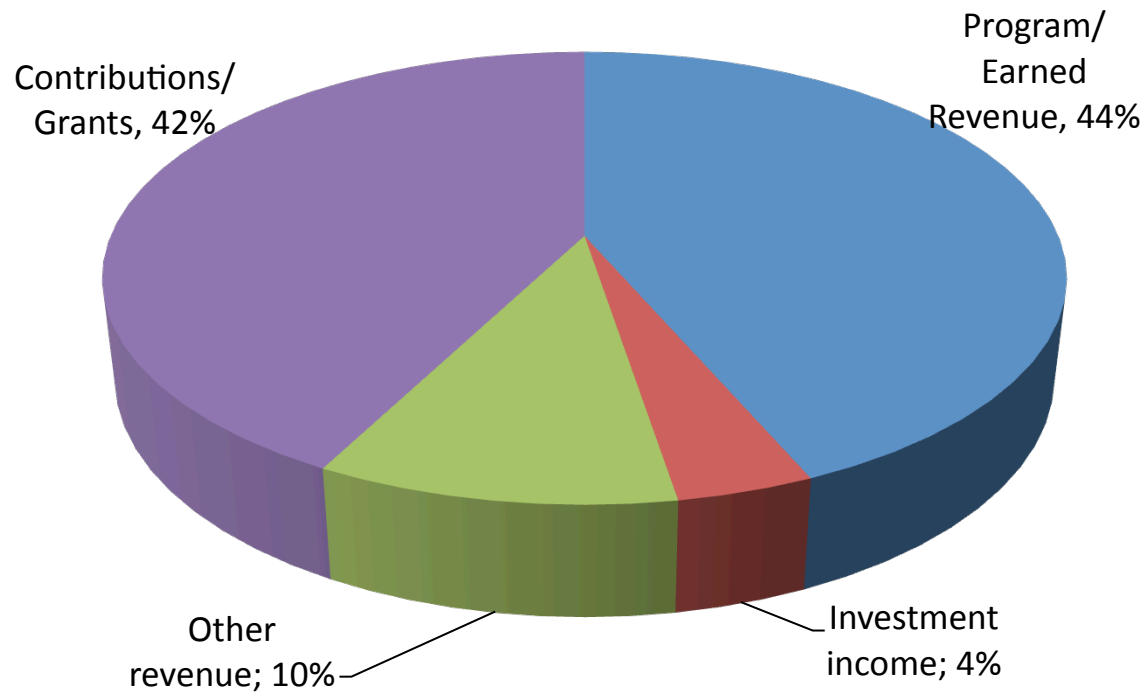
Used In
“Current
Organizations
Analysis”

Size of Organizations



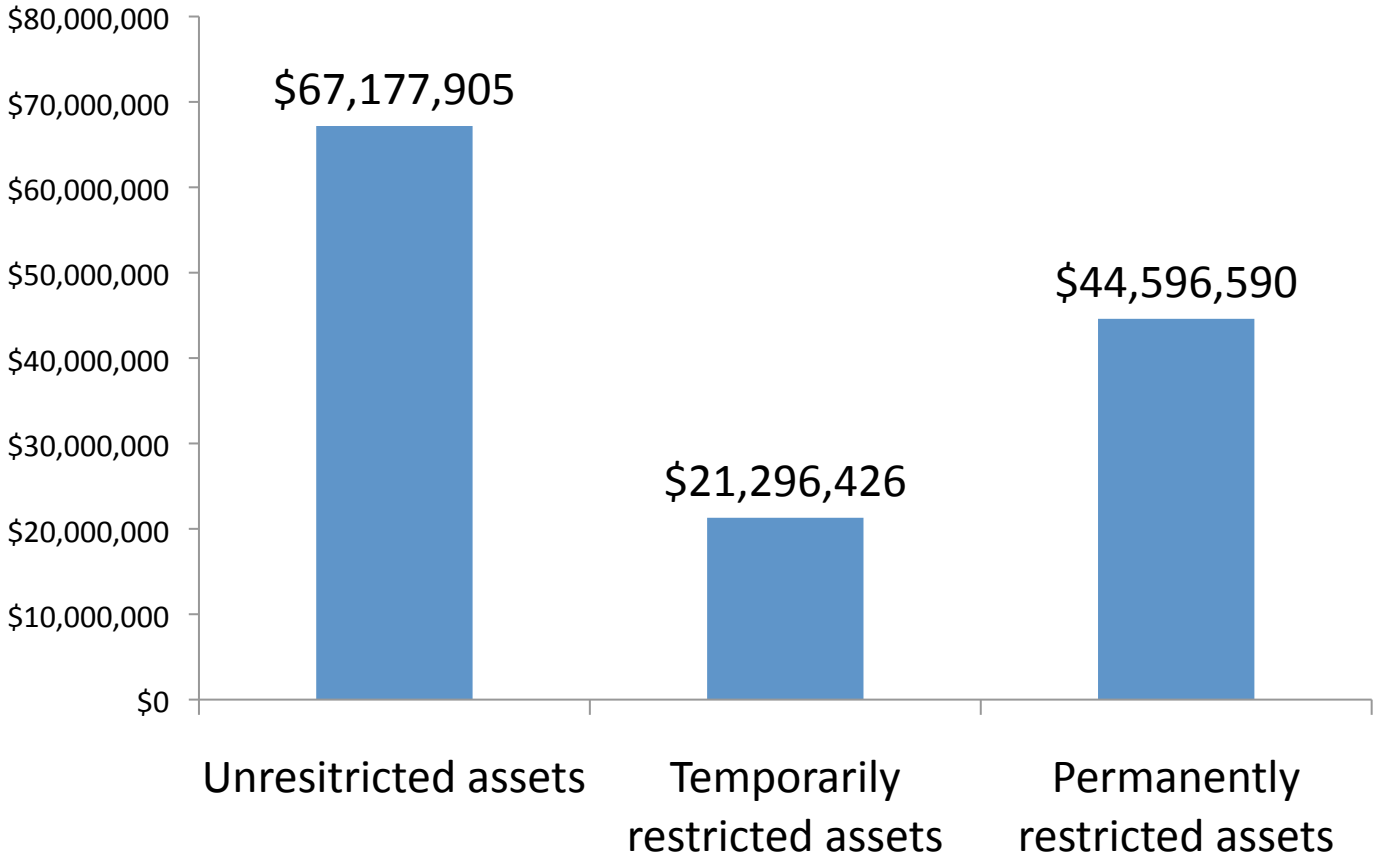
Revenue Sources

Total Revenue=\$35,685,214



% of Aggregated 2011 \$

Assets



Endowments

Aggregated Value of Endowments, 2011

- 12 (of 31) organizations had endowments

